

# T B S E R I E S

***indelB***

**trouble shooting**

TB\_31A\_41A\_51A\_(AC\_DC)\_TS\_28-11-2018

# T B   S E R I E S

3	ERROR E1
4	ERROR E2
5	ERROR E3
6	ERROR E4
7	ERROR E5
8	HOW TO REPLACE THE TEMPERATURE SENSOR
9 - 10	HOW TO REPLACE THE FAN
11	HOW TO REPLACE THE BATTERY PROTECTION SWITCH
12	HOW TO REPLACE THE LIGHT BULB
13	HOW TO REPLACE THE ECU
14	HOW TO REPLACE THE DISPLAY
15	HOW TO REPLACE THE LID
16 - 17	HOW TO SET THE OFF-SET VALUE

***indelB***

- **ERROR E1: Battery protection cut-out or problem of temperature sensor**

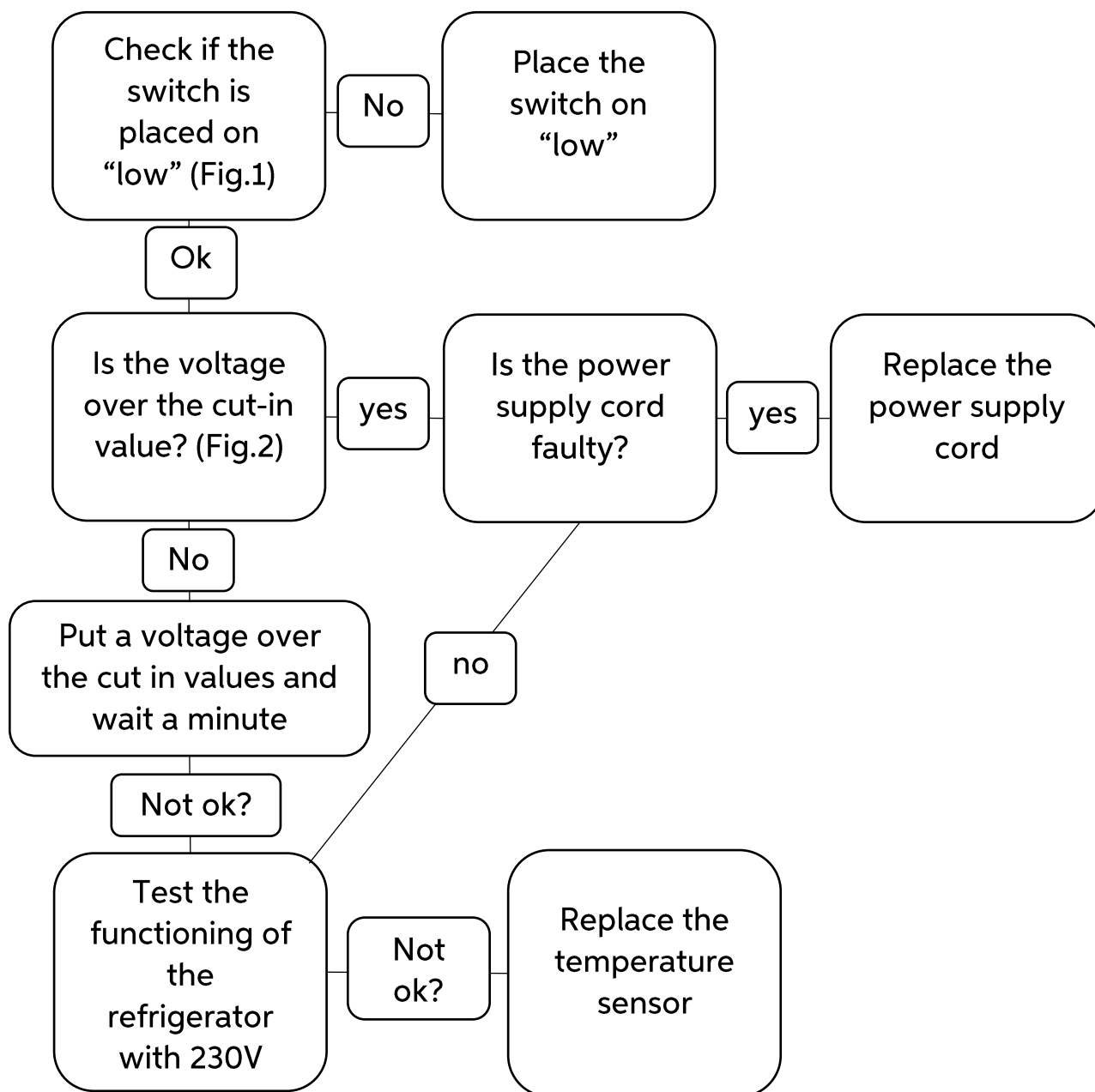


Fig. 1



Fig. 2

- ERROR E2: Fan over-current cut-out

This error is caused by an over-current that arrived at the fan. In this case you must replace the fan (see “How to replace the fan”).

- **ERROR E3: Motor start error**

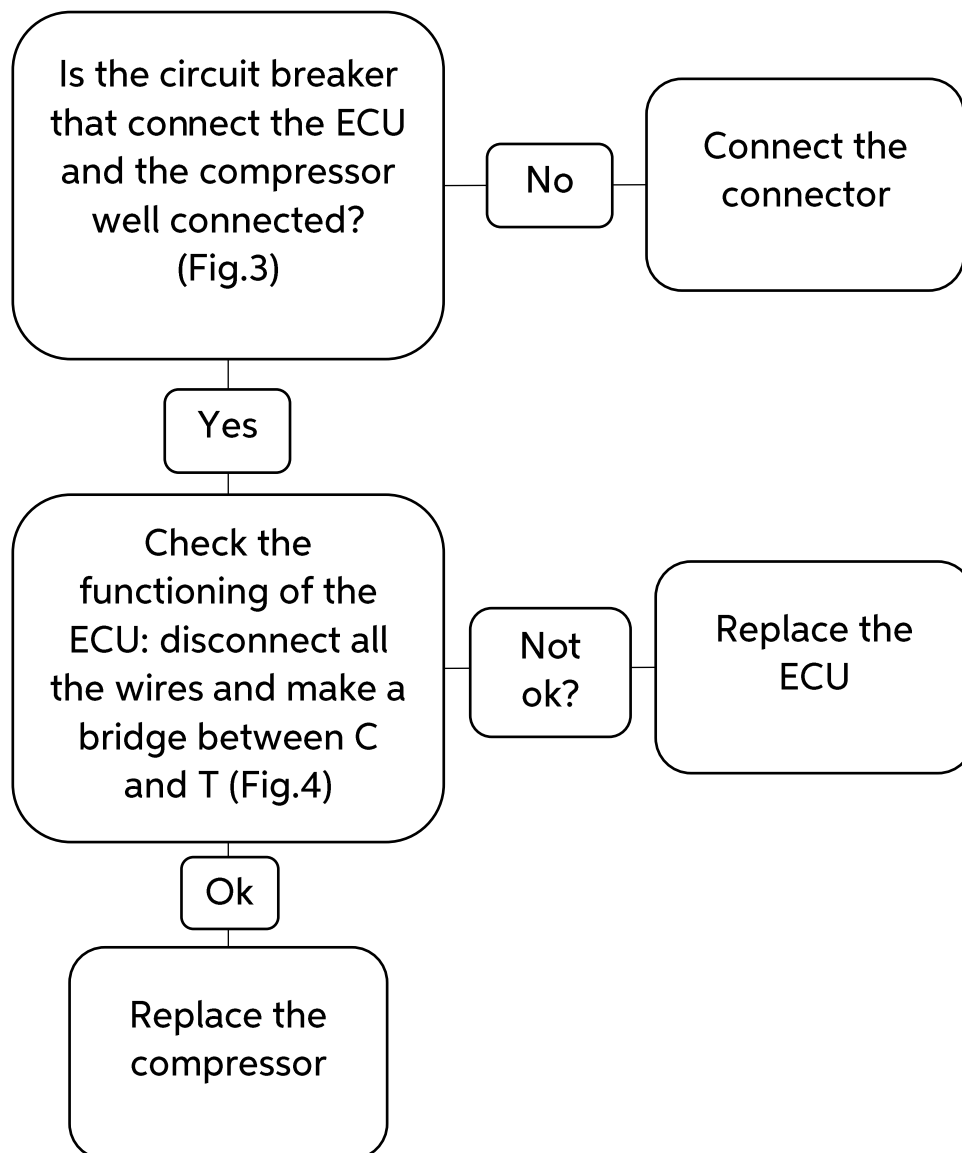
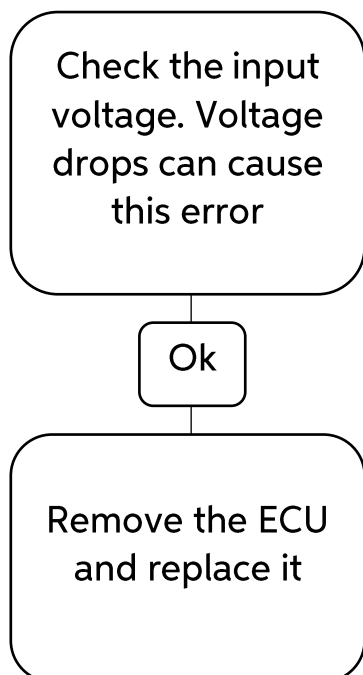


Fig. 3

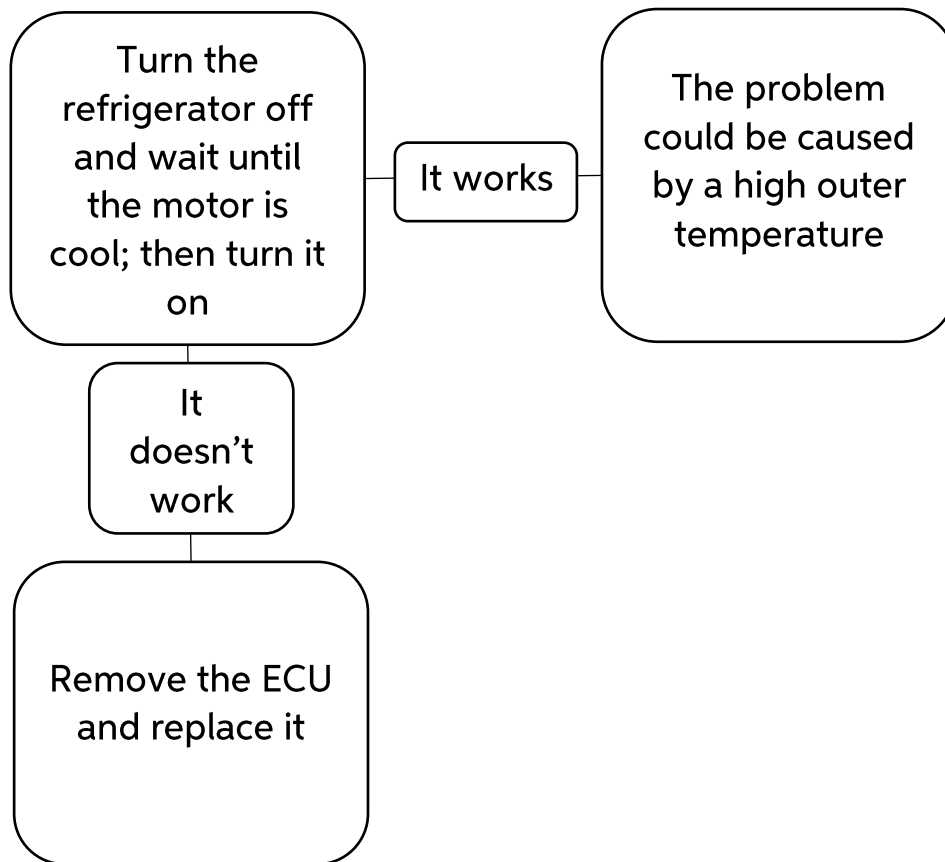


Fig. 4

- **ERROR E4: Minimum motor speed error**



- **ERROR E5: Thermal cut-out of electronic unit**



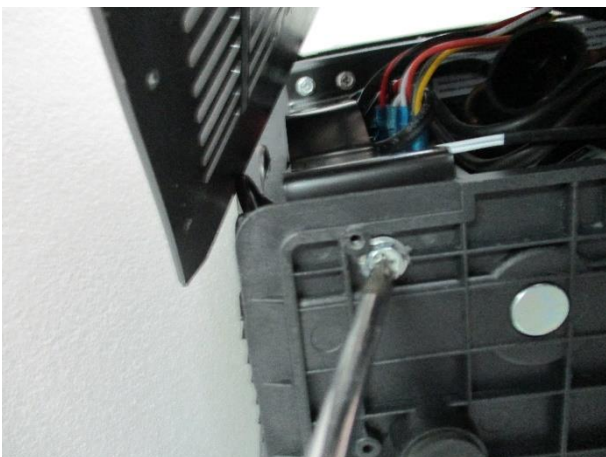
# HOW TO REPLACE THE TEMPERATURE SENSOR



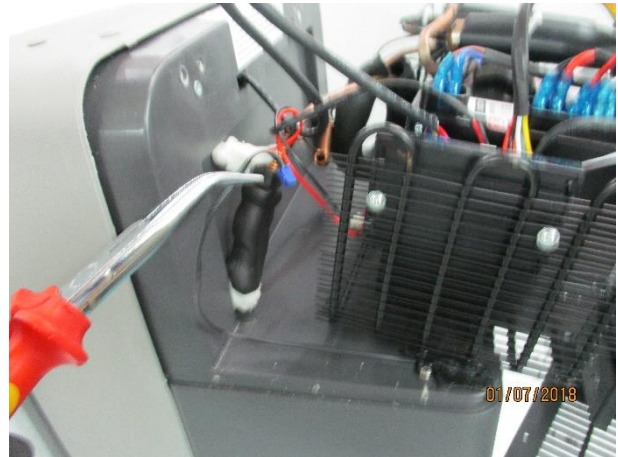
1. Unscrew the plastic support (11 screws)



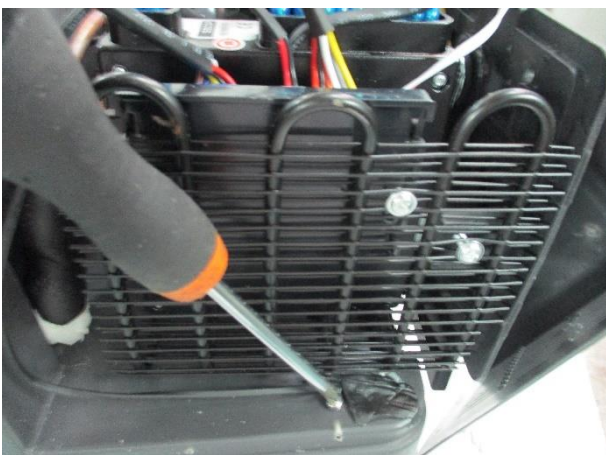
2. Unscrew the two brackets



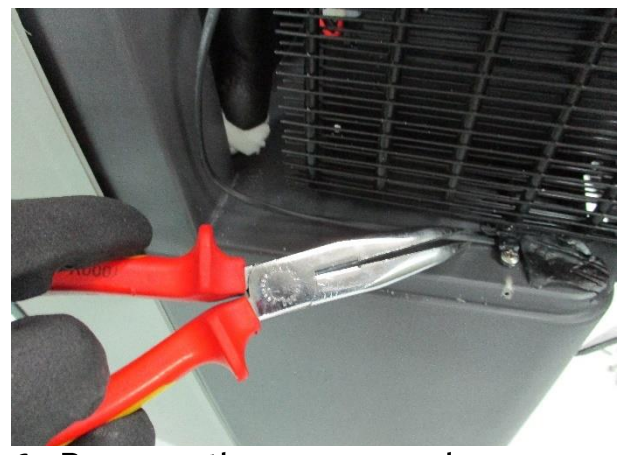
3. Unscrew the bolts (8 bolts)



4. Remove the sensor's wire



5. Unscrew the bolt that fasten the sensor



6. Remove the sensor and reverse the procedure to install a new one



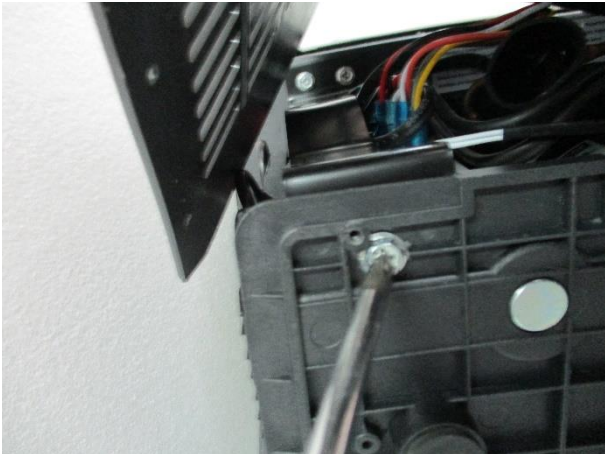
# HOW TO REPLACE THE FAN



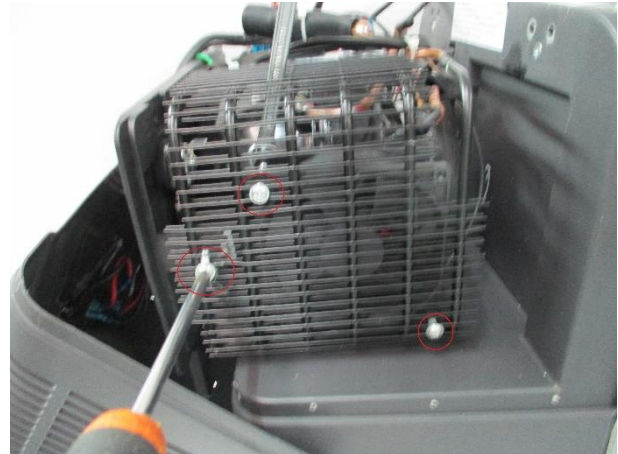
1. Unscrew the plastic support (11 screws)



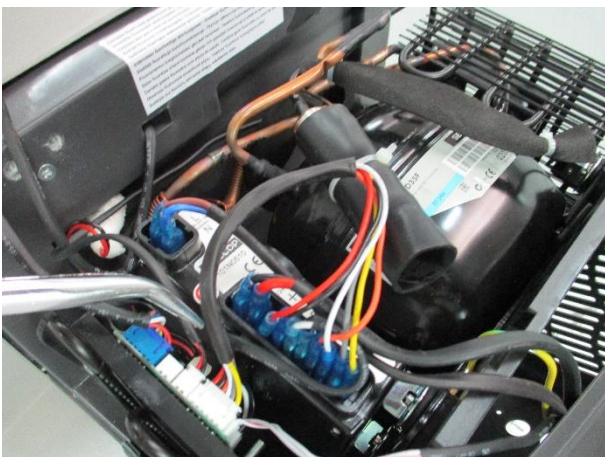
2. Unscrew the two brackets



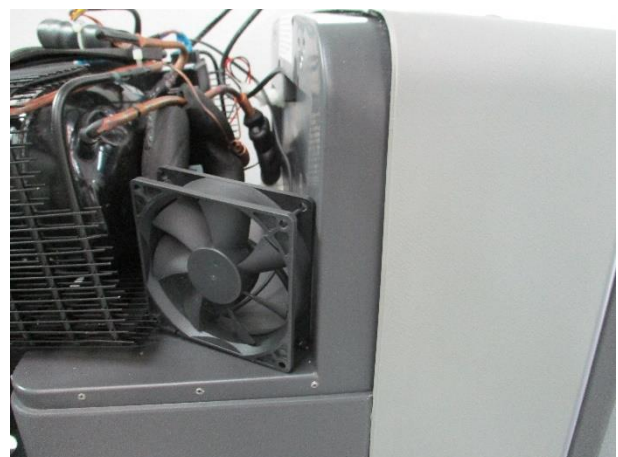
3. Unscrew the bolts (8 bolts)



4. Unscrew the bolts (3 bolts)



5. Remove the fan's wire



6. Remove the fan and reverse the procedure to install the new fan

Attention: put the fan with the green label towards the inside of the refrigerator



# HOW TO REPLACE THE BATTERY PROTECTION SWITCH



1. Unscrew the plastic support (11 screws)



2. Remove the label



3. Unscrew the two bolts



4. Remove the switch and reverse the procedure to install a new one

## HOW TO REPLACE THE LIGHT BULB



1. Pull the light bulb applying pressure on the button



2. Remove the light bulb and replace it



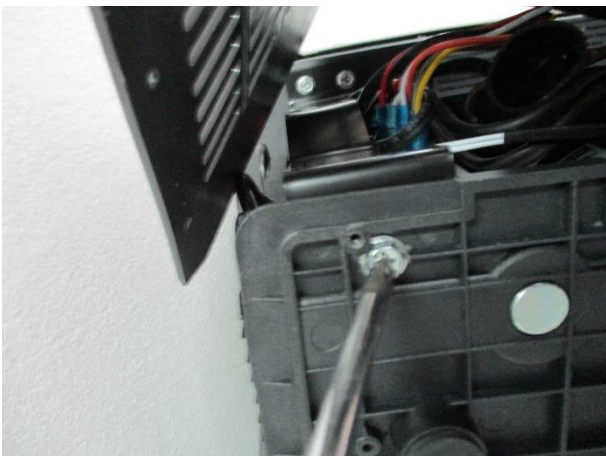
# HOW TO REPLACE THE ECU



1. Unscrew the plastic support (11 screws)



2. Unscrew the two brackets



3. Unscrew the bolts (8 bolts)



4. Unscrew the bolts from each side (6 bolts)



5. Unscrew the bolt in figure



6. Remove all the wires connected to the ECU and then replace the ECU reversing the procedure

## HOW TO REPLACE THE DISPLAY



1. Unscrew the plastic support (11 screws)



2. Remove the display's wire



3. Remove carefully the display from the corner with a screwdriver



4. Remove the display and reverse the procedure to install a new display

## HOW TO REPLACE THE LID



1. Unscrew the internal bolt



2. Insert a small rod in the lateral hole and open the cover applying pressure with the rod

### WARNING!

1. Don't lose the spring and the pivot fixing the cover
2. First put the spring and then the pivot to install the new lid



## HOW TO SET THE OFF-SET VALUE

This is the information needed to align the temperature shown on the display with the actual temperature inside the refrigerated compartment. Each off-set can be adjusted within a range of from -10 to +10.

After running the refrigeration system for a few hours, place a digital thermometer (not supplied) inside the compartment, in a location where a more accurate temperature is required, and check that the temperature shown on the display coincides with the temperature shown on the digital thermometer. If the temperature is not the same, the off-sets must be adjusted in relation to the temperature T you want the inside of the compartment to reach, so that the temperature reading on the display coincides with the temperature indicated by the thermometer.

The following table shows the factory off-set setting for each temperature range and the adjustment range for changing these settings:

OFF-SET	Temperature Range	Factory setting	Adjustment range
<b>F1</b>	$T \geq -6^{\circ}\text{C}$	-3°C	+10°C ÷ -10°C
<b>F2</b>	$-12^{\circ}\text{C} \leq T \leq -6^{\circ}\text{C}$	-5°C	+10°C ÷ -10°C
<b>F3</b>	$T \leq -13^{\circ}\text{C}$	-7°C	+10°C ÷ -10°C

With the refrigerator switched off, press and hold the **ECO/MAX** + ▲ + ▼ buttons at the same time for a few seconds to access the OFF-SET value adjustment.

Press the ▲ and ▼ buttons number of times to scroll through the three functions (F1-F2-F3) in succession. Once you have selected the function you wish to change, press the ECO/MAX button to access the selected OFF-SET value and press the ▲ and ▼ buttons to change the factory setting, while remaining within the +10°C ÷ -10°C range. Without having to press any other button to confirm, the display will automatically save the setting and exit programming mode.

### WARNING!

- We discourage you from changing the factory off-set setting.
- If the temperature inside the refrigerated compartment is different from the temperature shown on the display, and all these situations are verified:
  1. The appliance hasn't any of the failures described in this guide;
  2. The room temperature isn't too hot;



3. The door isn't opened too often;
4. The door is closed completely;
5. The temperature control is set correctly;
6. The door gasket does seal correctly;

You could adjust the difference between the inner temperature and the display temperature's value changing the off-set values.